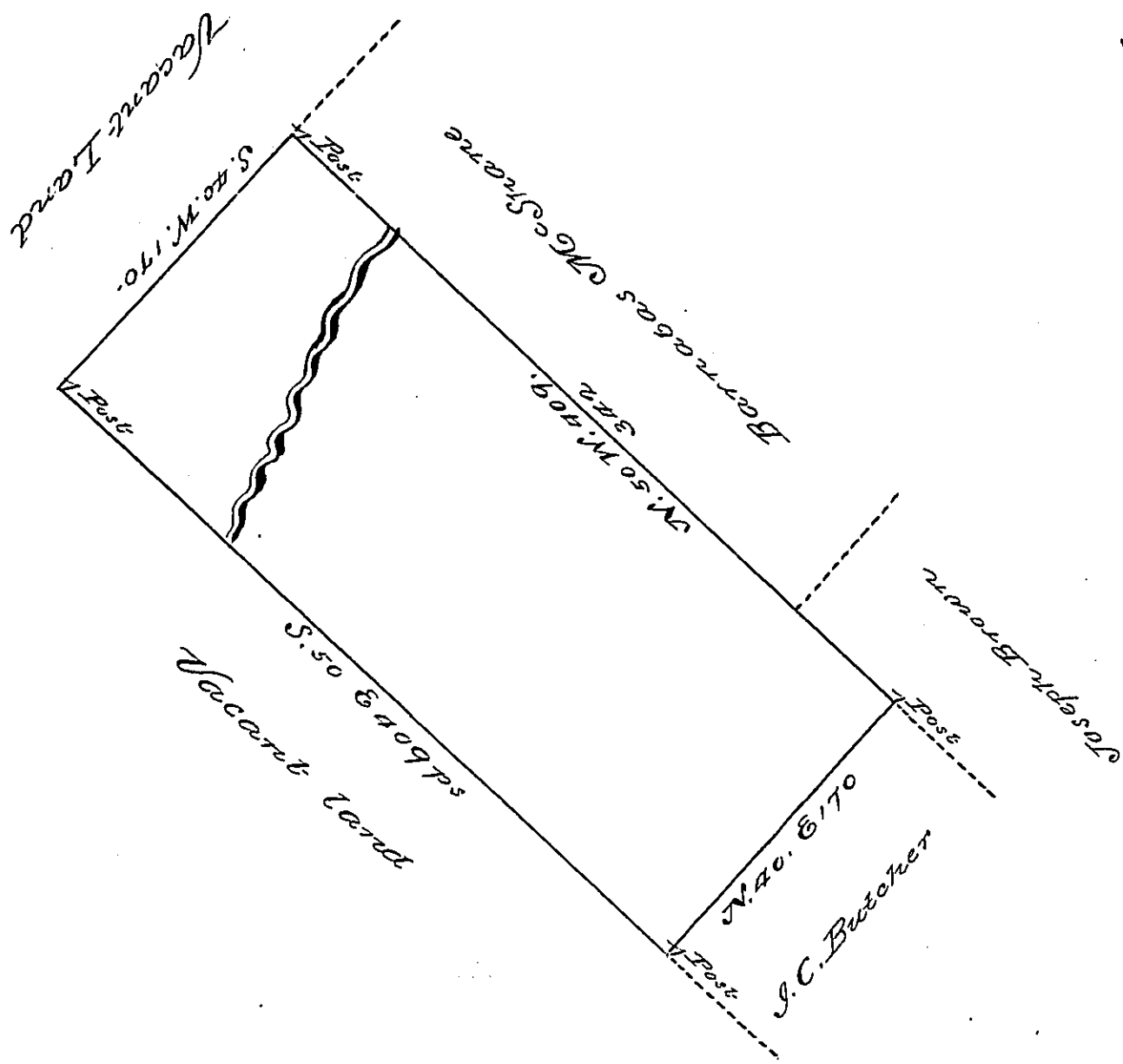


X



By Virtue of a Warrant dated the 9<sup>th</sup> October 1788 Surveyed the 10<sup>th</sup> October 1789 to Robert McClay the above tract of land Situate on the Waters of White Creek a branch of Lehi in the County of Northampton Containing four hundred and nine Acres one hundred and fifty four perches and the allowance of Six y<sup>e</sup> Cent

p/ Leo Palmer

Daniel Brodhead Esquire }  
 Surveyor General }

IN TESTIMONY that the above is a copy of the original remaining on file in the Department of Internal Affairs of Pennsylvania, made conformably to an Act of Assembly approved the 16th day of February, 1833, I have hereunto set my Hand and caused the Seal of said Department to be affixed at Harrisburg, this fifth day of July 1898

*James W. Latta*  
 Secretary of Internal Affairs.